

General Description

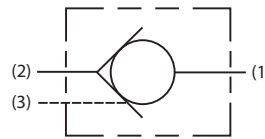
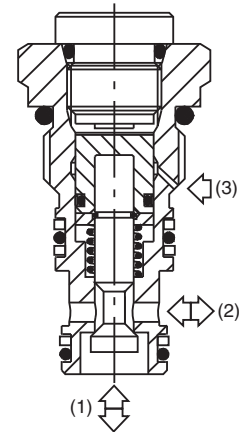
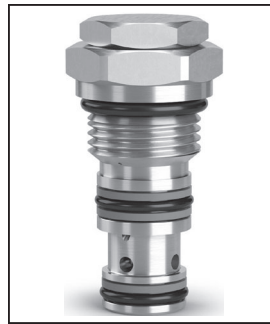
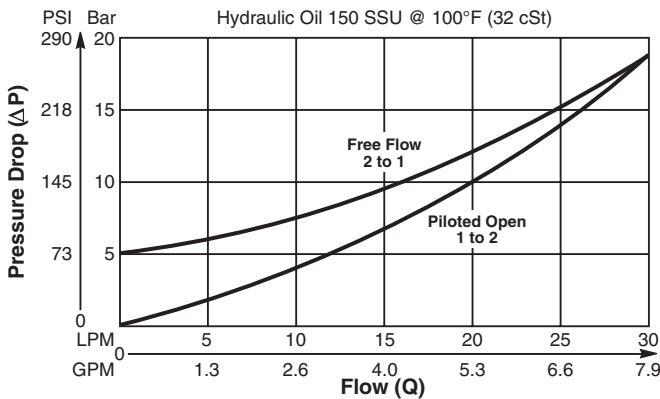
Miniature Pilot to Open, Poppet Type Check Valve.
 For additional information see Technical Tips on pages CV1-CV2.

Features

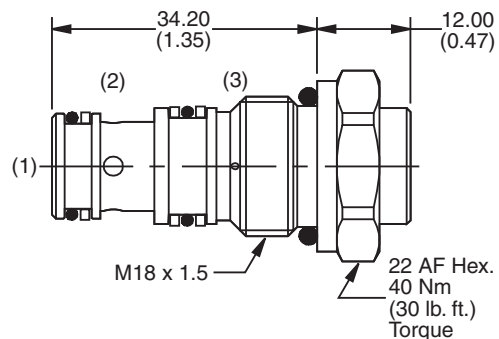
- Hardened poppet for maximum durability
- Low leakage - less than 3 drops/min.
- Sealed pilot
- Extremely compact construction - can be fitted directly into most cylinders
- Cavity commonality with load control valves
- Dual line blocks available
- All external parts zinc plated

Performance Curve

Pressure Drop vs. Flow (Through cartridge only)



Dimensions Millimeters (Inches)



Specifications

Rated Flow	30 LPM (8 GPM)
Nominal Flow @ 7 Bar (100 PSI)	16 LPM (4.2 GPM) (Piloted Open)
Maximum Inlet Pressure	420 Bar (6000 PSI)
Leakage at 150 SSU (32 cSt)	Less than 3 drops/min.
Cracking Pressure	5 Bar (72 PSI)
Pilot Ratio	4:1
Cartridge Material	Steel operating parts, hardened steel poppet.
Fluid Compatibility/ Viscosity	Mineral-based or synthetic with lubricating properties at viscosities of 45 to 2000 SSU (6 to 420 cSt)
Filtration	ISO-4406 18/16/13, SAE Class 4
Approx. Weight	.066 kg (.145 lbs.)
Cavity	53-1 (See BC Section for more details)

Ordering Information

D4A020 Check Valve
N Seals

Order Bodies Separately
 See section BC

LB10 Line Body
S Body Material

Code	Seals / Kit No.	Operating Temp.
N	Nitrile, Buna-N / (SK30090N-1)	-34°C to +121°C (-30°F to +250°F)

Code	Porting
310	3/8" BSP (main) 1/4" BSP (aux)
312	3/8" BSP Dual Cavity

Code	Body Material
S	Steel

CV Check Valves

SH Shuttle Valves

LM Load/Motor Controls

FC Flow Controls

PC Pressure Controls

LE Logic Elements

DC Directional Controls

SV Solenoid Valves

PV Proportional Valves

CE Coils & Electronics

BC Bodies & Cavities

TD Technical Data